

Address: 231 West Golf Extension,
New Cairo, Cairo, Egypt.
Website: www.eltayebi.com
Facebook: El Tayebi Developments
Hotline: 16170



215
-DEGLA MAADI-



About El Tayebi Developments

ABOUT US

El Tayebi Developments is a privately held company specializing in niche residential and commercial development, investment, and management in Cairo's finest districts including Maadi Al Sarayat, Maadi Degla, and West Golf New Cairo.

Established in 2006, El-Tayebi Real Estate Development has been forming long lasting bonds with happy families for the past decade. With over 10 projects delivered, we have been leading the industry with our unique and innovative products to accommodate market demand.

We pride ourselves for the luxury and efficiency we deliver to our clients. Our team works hard to ensure our communities receive the highest quality of life in the premium locations we enter.

This promise distinguishes our properties across the country from the competition .

Because **Our Priority** is
You & Your Family



Building 215

-Degla Maadi-

Is a luxurious residential building located in the heart of degla, one of the finest neighborhood in **EIMaadi (Cairo)**.

The design is inspired by **Classic Architecture** to complement to the area's beauty and add to Maadi's charm.

The residence consists of five residential floor, offering unique duplexes and apartments with a classic luxurious entrance hall, high end elevator,high end interior finishing ,and private parking space as an add-on.

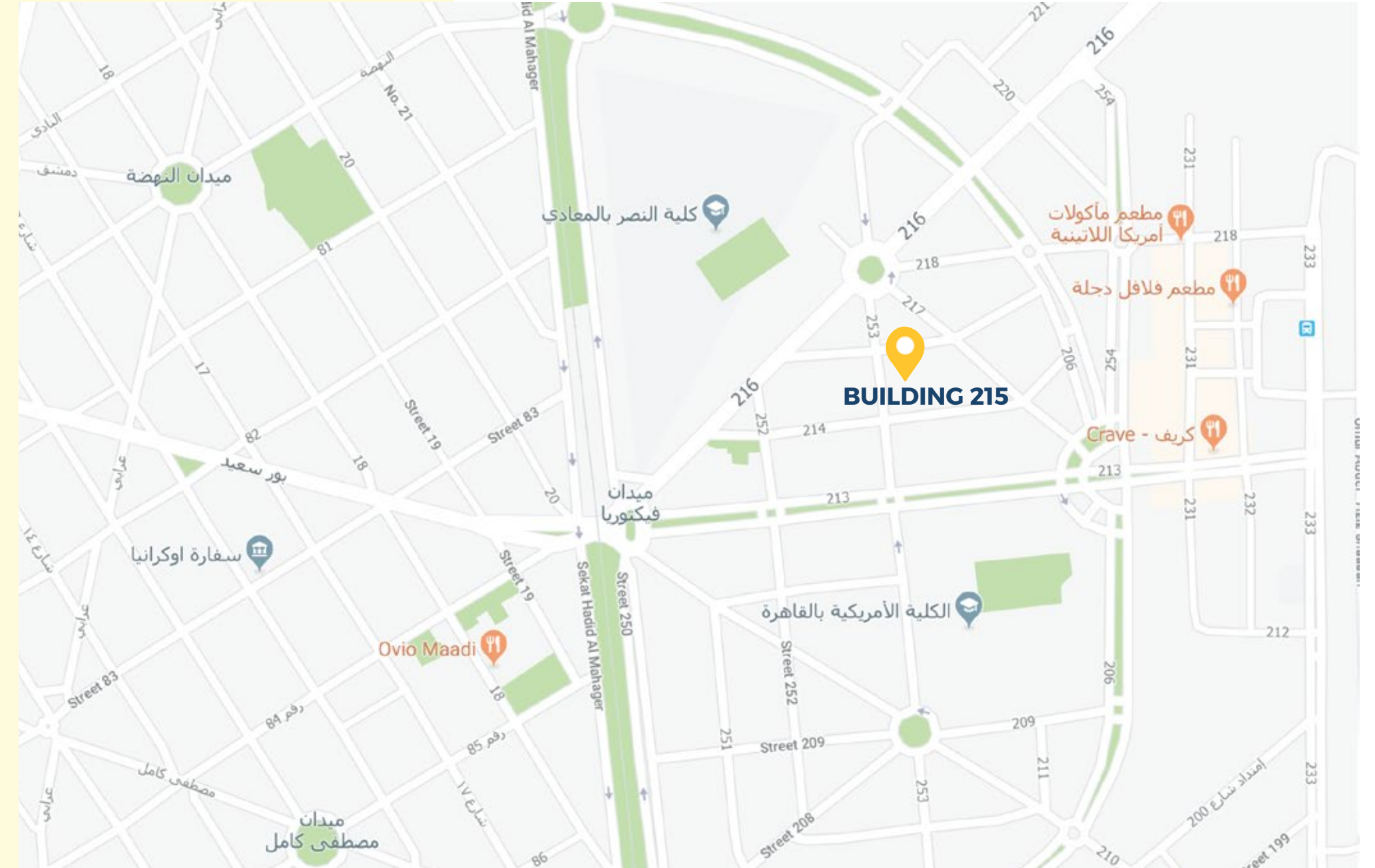
The Luxury Living You Deserve

ABOUT BUILDING



LOCATION

Residence is located on Street 215 in the heart of Degla ElMaadi, where it is surrounded by villas and gardens

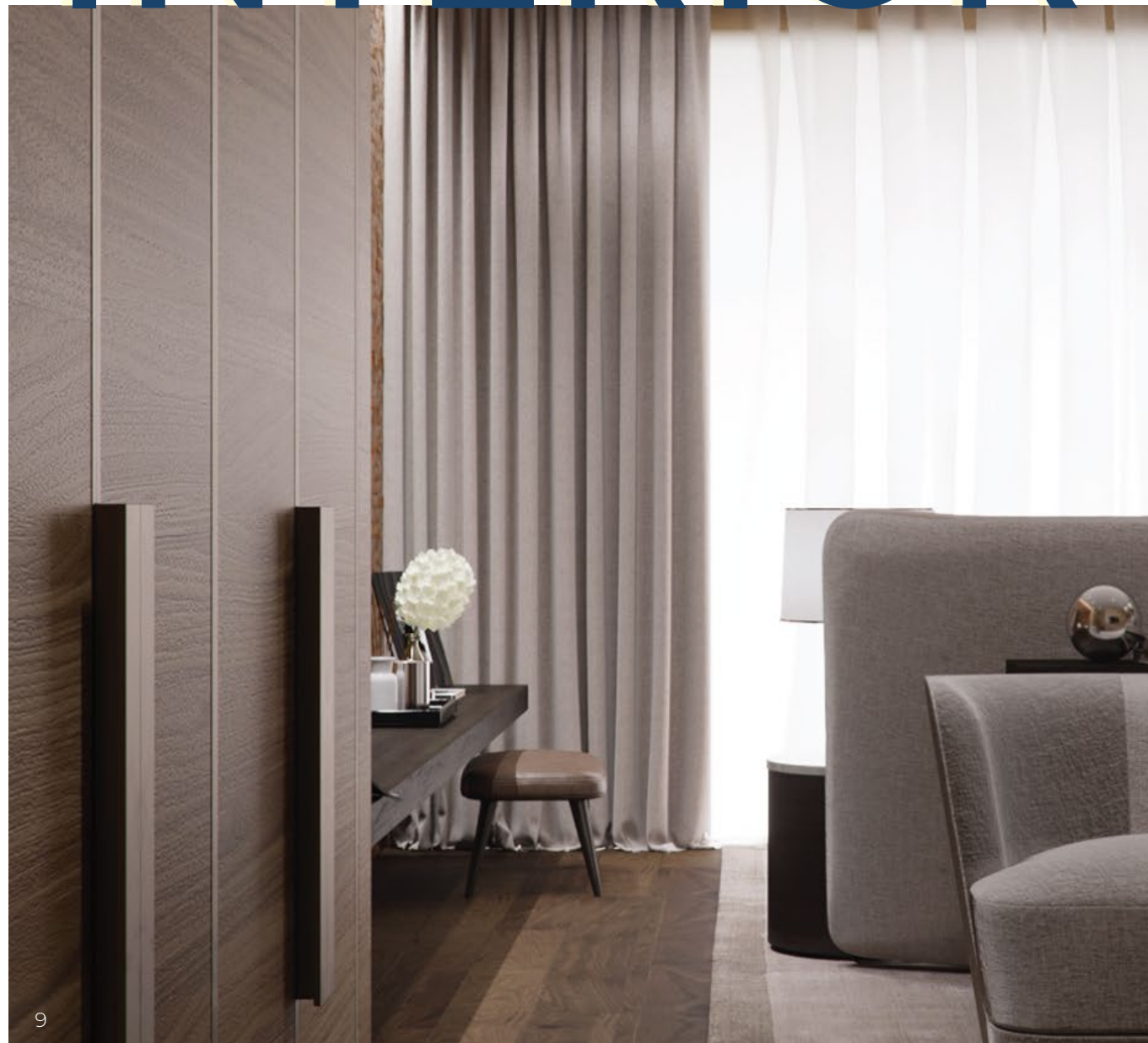


- 215 Building on map -

EXTERIOR



INTERIOR



SERVICES

24/7 Security



Private Parking Space

Classic Marble Entrance



High End
Elevators



APARTMENT & DUPLEXES

DUPLEX LOWER GROUND FLOOR PLAN

| | |
|---------------------|---|
| Lower Ground Area | 118 m ² |
| Lower Ground Garden | 134m ² |
| Total unit area | 305m ² |
| Total garden area | L:212 m ² - R:168 m ² |

Unit Dimension

| | |
|-----------------|------------------------|
| Living Area: | 4.5x7.3 m ² |
| Dinning: | 4.7x3.0 m ² |
| Kitchen: | 4.0x3.2 m ² |
| Guest Bathroom: | 2.6x1.2 m ² |
| Maids Room: | 3.0x2.0 m ² |



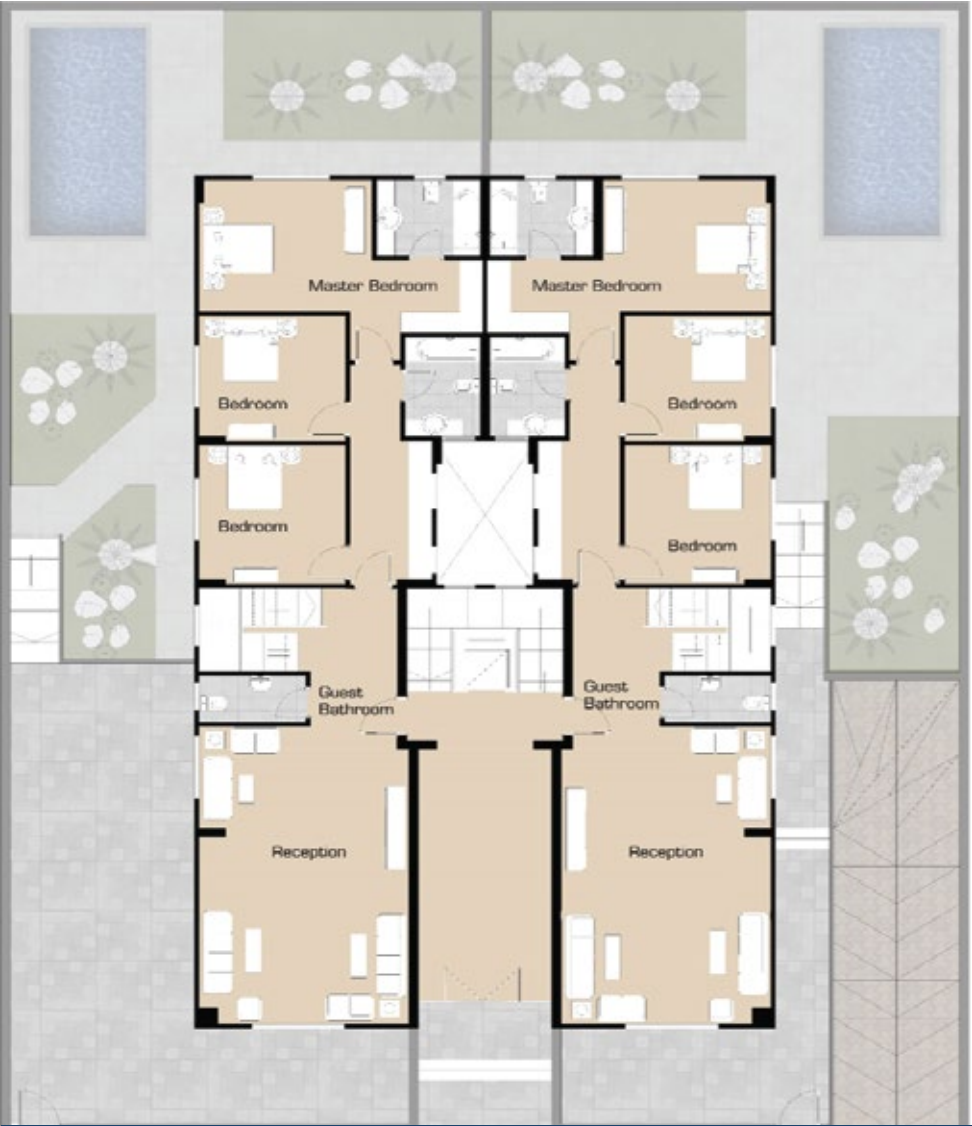
- LOWER GROUND PLAN -

DUPLEX
UPPER GROUND FLOOR PLAN

| | |
|---------------------|---|
| Upper Ground Area | 187m ² |
| Upper Ground Garden | L:87m ² - R:34m ² |
| Total Unit Area | 305m ² |
| Total Garden Area | L:212m ² - R:168m ² |

Unit Dimension

| | |
|------------------|------------------------|
| Reception: | 8.5x5.4 m ² |
| Guset Bathroom: | 2.7x1.3 m ² |
| Main Bathroom : | 2.8x1.9 m ² |
| Bedroom1: | 4.0x3.7 m ² |
| Bedroom2: | 3.7x3.5 m ² |
| Master Bedroom: | 4.5x4.0 m ² |
| Master Dressing: | 2.2x2.1 m ² |
| Master Bathroom: | 2.6x2.2m ² |



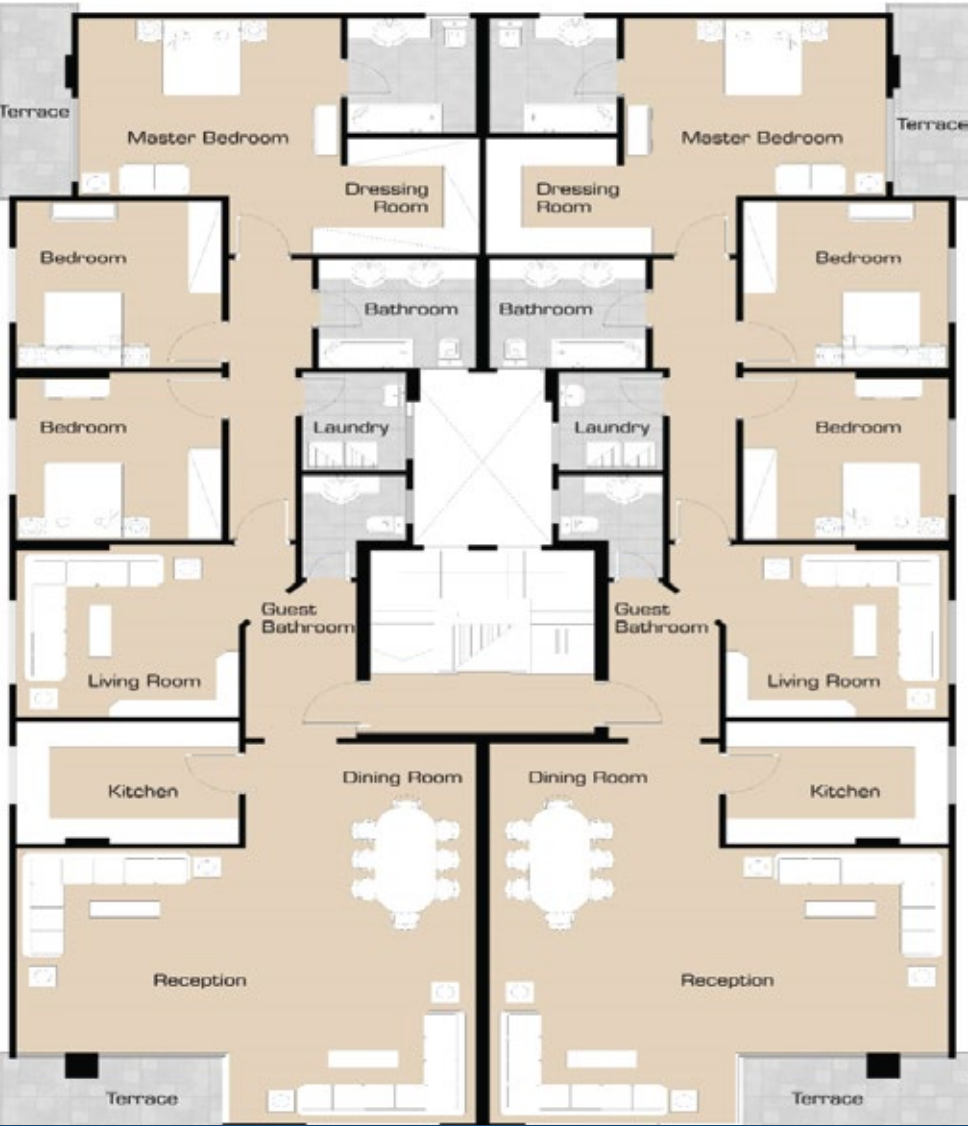
- UPPER GROUND PLAN -

TYPICAL

| | |
|------------|--------------------|
| Floor: | First - Secound |
| Unit Area: | 260 m ² |

Unit Dimension

| | |
|------------------|--------------------------|
| Reception: | 11.9x10.5 m ² |
| Terracel: | 1.8x4.0 m ² |
| Kitchen: | 2.9x4.0 m ² |
| Guest Bathroom: | 2.5x2.8 m ² |
| Living Room: | 4.0x4.13 m ² |
| Laundry Room: | 2.33x1.87 m ² |
| Main Bathroom: | 2.60x2.82 m ² |
| Bedroom1: | 3.70x4.0 m ² |
| Bedroom2: | 3.80x4.0 m ² |
| Master Bedroom: | 6.25x5.40 m ² |
| Master Bathroom: | 2.30x2.75 m ² |
| Master Dressing: | 2.78x2.37 m ² |
| Terrace 2: | 4.53x1.30 m ² |



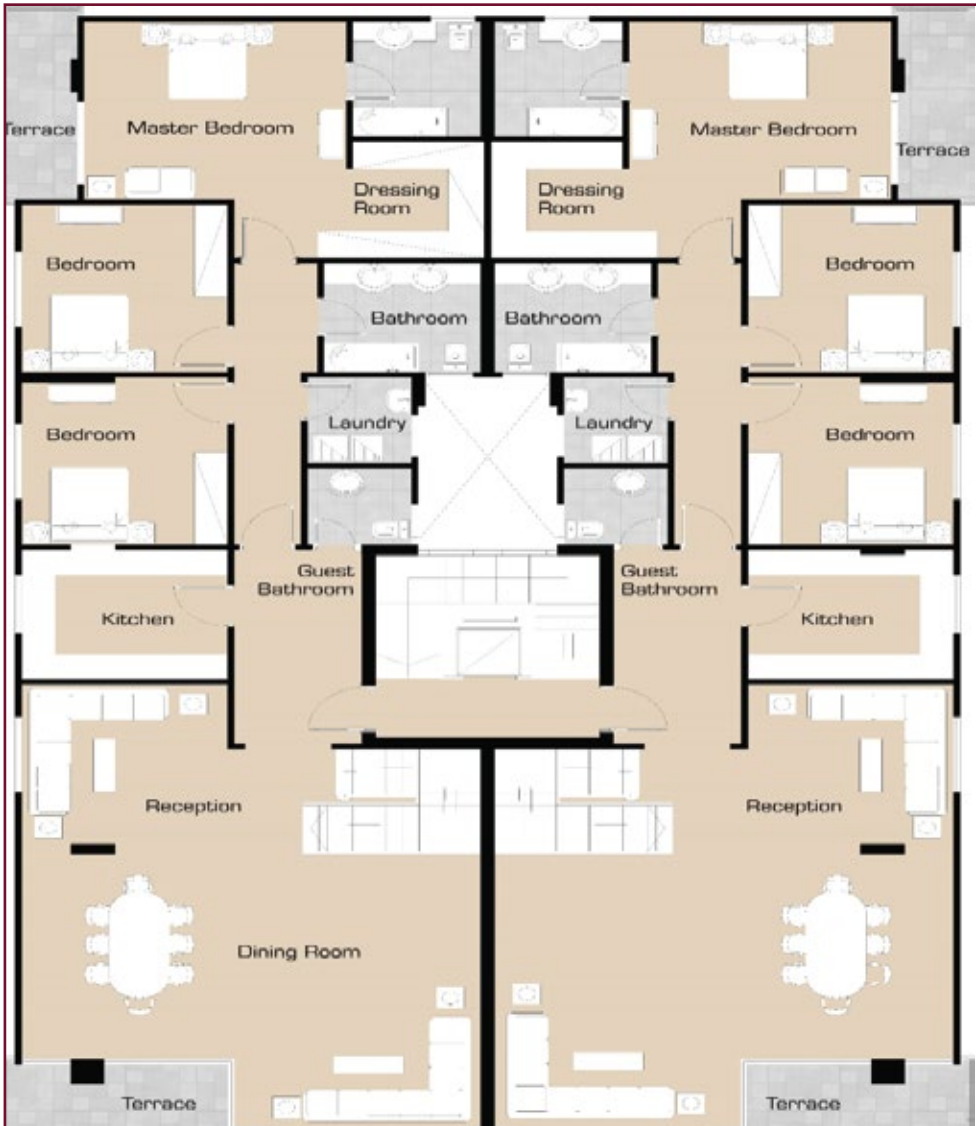
- TYPICAL PLAN -

PENTHOUSE
UPPER FLOOR PLAN

Type: Penthouse
Floor: Third- Roof
Unit Area: 260 m²

Unit Dimension

- Reception: 11.9x10.5 m²
- Terrace1: 1.8x4.0 m²
- Kitchen: 2.9x4.0 m²
- Guest Bathroom: 2.5x2.8 m²
- Living Room: 4.0x4.13 m²
- Laundry Room: 2.33x1.87 m²
- Main Bathroom: 2.60x2.82 m²
- Bedroom1: 3.70x4.0 m²
- Bedroom2: 3.80x4.0 m²
- Master Bedroom: 6.25x5.40 m²
- Master Bathroom: 2.30x2.75 m²
- Master Dressing: 2.78x2.37 m²
- Terrace 2: 4.53x1.30 m²



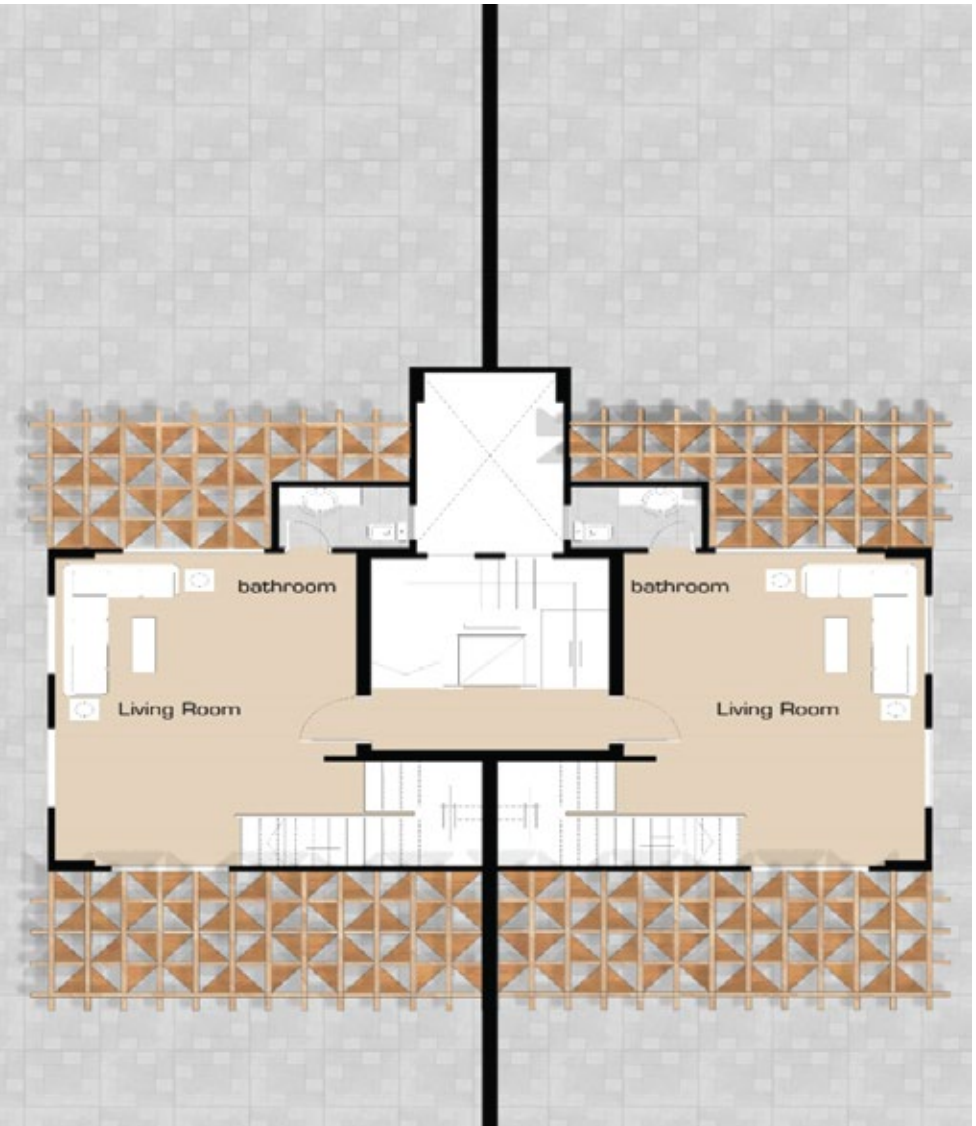
- PENTHOUSE PLAN -

PENTHOUSE
ROOF PLAN

Roof Area: 54 m²

Unit Dimension

- Living Area: 7.15x5.11 m²
- Bathroom: 2.22x1.4 m²



- ROOF PLAN -